



## **Falk™ Lifelign® G20**

### ***Precision. Power. Performance.***

You want a trusted name when it comes to providing engineered power transmission products that improve productivity and efficiency. Rexnord provides superior products for your industrial applications world wide. We work closely with you to reduce maintenance costs, eliminate redundant inventories and prevent equipment downtime.

#### ***Applications include:***

- ▶ pumps
- ▶ paper machines
- ▶ general purpose machinery

### ***Falk™ Lifelign® Gear Couplings***

Large bore capacity gear coupling with superior torque ratings. Available in both single and double engagement designs. Falk is a Rexnord brand.



**Ex Certified II 2GD c T5**

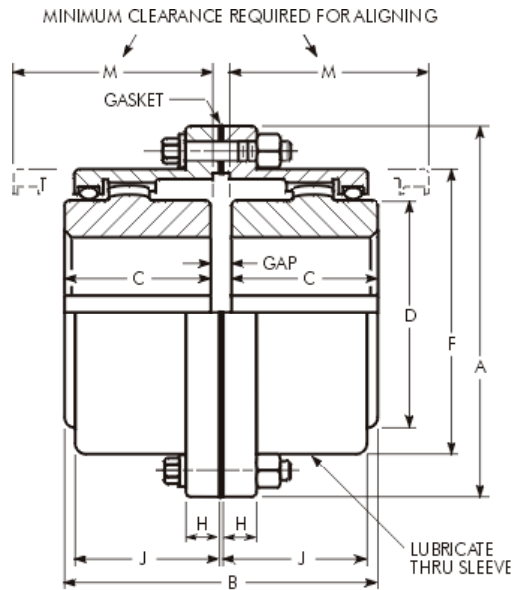
# Falk™ Lifelign® G20

## Features

- ▶ Large bore capacity
- ▶ High torque ratings
- ▶ Alloy steel option
- ▶ Lubrication through sleeve

## Benefits

- ▶ Smaller coupling size
- ▶ Smaller coupling size
- ▶ Increased bore capacity
- ▶ Reliable lubrication



Torque Demands Driven Machine	Typical Application for Electric Motor or Turbine Driven Equipment	Typical Service Factor
	Constant torque such as centrifugal pumps blowers and compressors	1.0
	Continuous duty with some torque variations including plastic extruders and forced draft fans	1.5
	Light shock loads from metal extruders, cooling towers and log haulers	2.0
	Moderate shock loading as expected from a car dumper, stone crusher, vibrating screen	2.5
	Heavy shock load with some negative torques from reciprocating pumps, compressors, reversing turnout tables	3.0
	Frequent torque reversals such as reciprocating compressors with frequent torque reversals which do not necessarily include reverse rotations	Consult Rexnord Engineering

SIZE	Torque Rating (Nm)	Allow Speed (rpm)	Max Bore (mm)	Min Bore (mm)	A (mm)	Gap (mm)	B (mm)	C (mm)	D (mm)	F (mm)	H (mm)	J (mm)	M (mm)	Lube Weight (kg)	Coupling Weight with No Bore-kg
1010G	1 140	8 000	50	13	115	3	88	42	68	83	14	39	51	0,04	4,5
1015G	2 350	6 500	65	20	152	3	101	49	86	105	19	48	61	0,07	9,0
1020G	4 270	5 600	78	26	177	3	127	62	105	126	19	59	77	0,11	15,9
1025G	7 470	5 000	98	32	212	5	158	77	130	154	21	72	92	0,21	29,5
1030G	12 100	4 400	111	39	239	5	187	91	152	180	21	84	107	0,36	43,1
1035G	18 500	3 900	134	51	279	6	218	106	177	211	28	98	130	0,54	68,0
1040G	30 600	3 600	160	64	317	6	247	120	209	245	28	111	145	0,90	97,5
1045G	42 000	3 200	183	77	346	8	277	134	235	274	28	123	166	1,0	136
1050G	56 600	2 900	200	89	388	8	314	153	254	305	38	141	183	1,7	191
1055G	74 000	2 650	220	102	425	8	344	168	279	334	38	158	204	2,2	249
1060G	90 400	2 450	244	115	457	8	384	188	304	366	25	169	229	3,1	306
1070G	135 000	2 150	289	127	527	10	451	220	355	424	28	196	267	4,2	485

Sizes up to 6,7 Million Nm available consult Rexnord



**REXNORD NV, Belgium**

Dellingstraat 55

**2800 Mechelen**

Phone: +32 / 15 44 38 11

Fax: +32 / 15 44 38 60

E-mail: CSB@rexnord.com

[www.rexnord.eu](http://www.rexnord.eu)

## Contact